

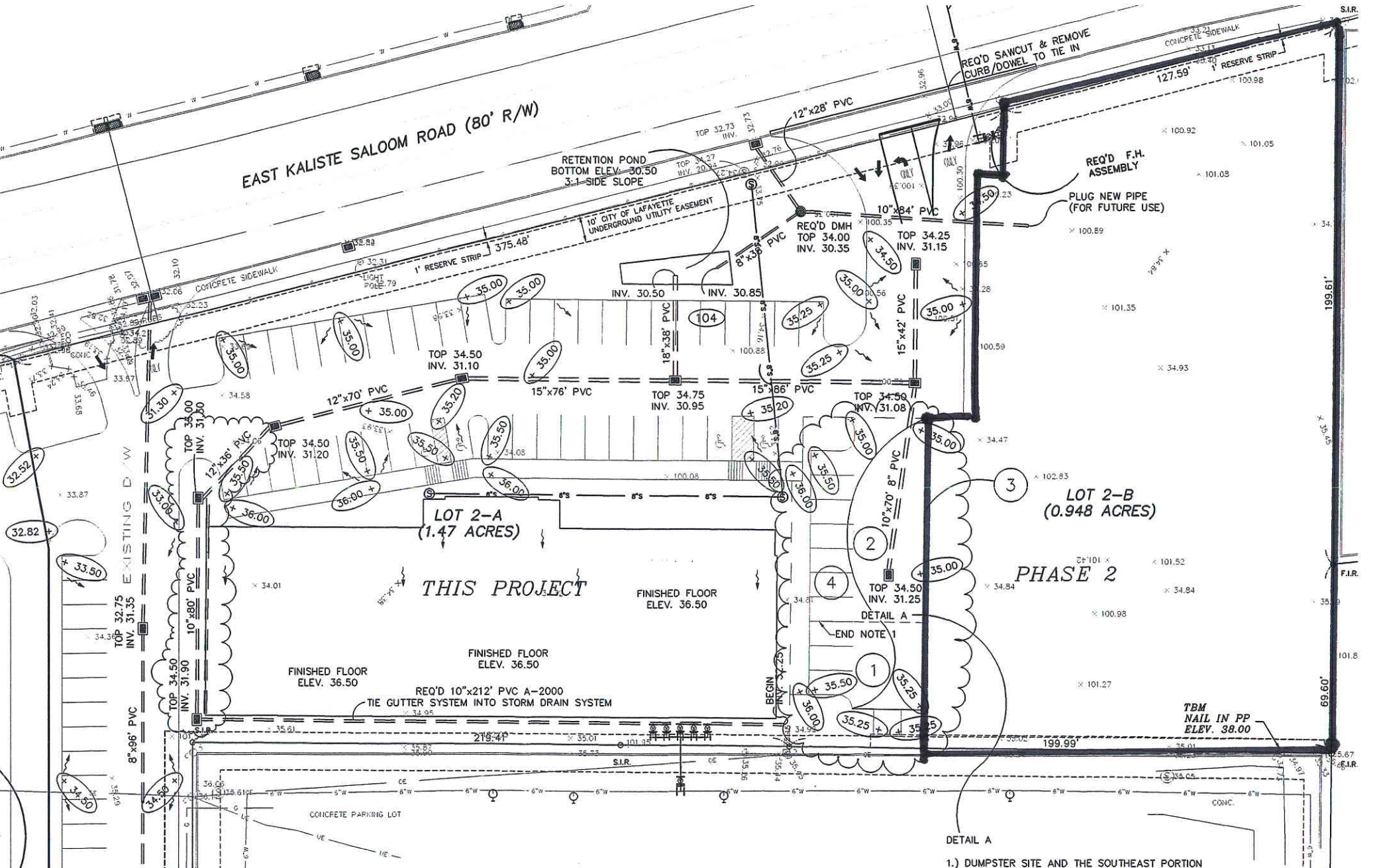
EAST KALISTE SALOOM ROAD (80' R/W)

RETENTION POND  
BOTTOM ELEV. 30.50  
3:1 SIDE SLOPE

10' CITY OF LAFAYETTE  
UNDERGROUND UTILITY EASEMENT

REQ'D SAWCUT & REMOVE  
CURB/DOWEL TO TIE IN

REQ'D F.H.  
ASSEMBLY  
PLUG NEW PIPE  
(FOR FUTURE USE)



LOT 2-A  
(1.47 ACRES)

LOT 2-B  
(0.948 ACRES)

THIS PROJECT

PHASE 2

FINISHED FLOOR  
ELEV. 36.50

FINISHED FLOOR  
ELEV. 36.50

FINISHED FLOOR  
ELEV. 36.50

REQ'D 10"x212" PVC A-2000  
TIE GUTTER SYSTEM INTO STORM DRAIN SYSTEM

DETAIL A  
END NOTE 1

TBM  
NAIL IN PP  
ELEV. 38.00

1.) DUMPSTER SITE AND THE SOUTHEAST PORTION